



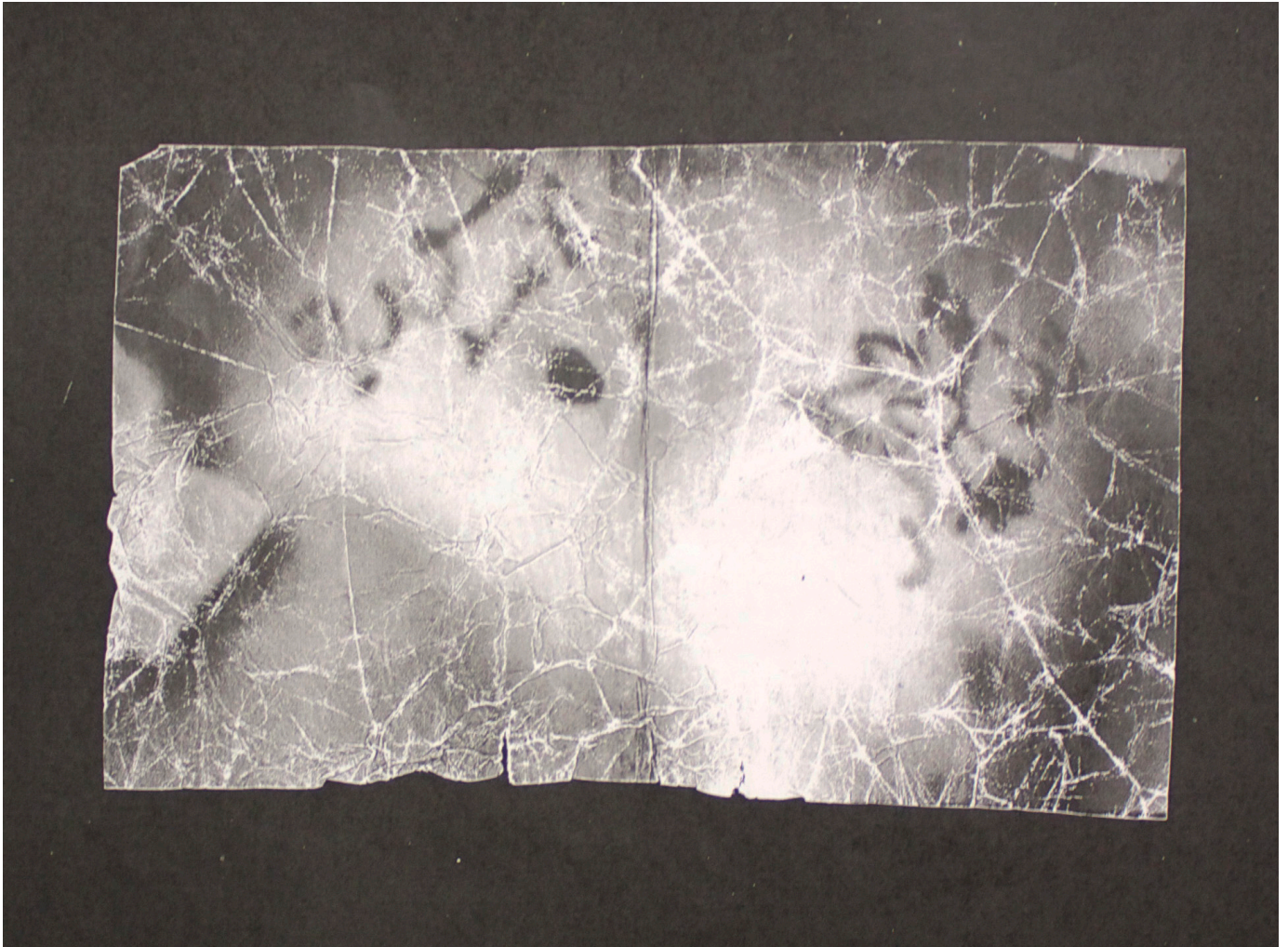






*‘Redirect the energy flow, distil  
the mass, give weight to time’*

AMY WILSON



Systems of communication and systems of power are inextricably linked; the praxis of my work focuses on breaking open these circuits. My work therefore does not aim to feed systems of consumption within a frenzy of time, but rather aims to combat a pandemic of contemporariness with a participation in ‘ways of being and seeing’ that offers engagement with the dynamic energies found in embodied social interactions.

In a world where contemporary ways of being continue to take the form of our modern brutalities, there is a commons that wants to be seen. These images create that commons; an alternative social space from which meaningful dialogue concerning human conflict can arise. This is a redefinition of mass communication, to matter-communication. Mass given new form, acting as a counterweight to dominant systems of power and communication.